

# 000.620 PD - 007 - BILL OF MATERIALS 3 LITE

ITEM NO.	DESCRIPTION	QUANTITY	PART NO.	FAB DWG. NO	SOURCE
1	FXD PNL TOP RAIL	2	10001102	10001102-F-01	A
2	STILE	4	10001102	10001102-F-01	A
3	BOTTOM RAIL	2	10001102	10001102-F-02	A
4	INTERLOCK	1	10001117	10001117-F-04	A
5	SCREW COVER	1	10001118	10001118-F-01	A
6	GLAZING BEAD	8	10001111	10001111-F-01	A
7	STILE REINFORCEMENT - JAMB	2	10300150	10300150-F-01	PPPP
8	STILE REINFORCEMENT - INTERLOCK	2	10300151	10300151-F-01	PPPP
9	WEATHER-STRIPPING - 270 x 250	AS REQD	W21255MW	STRAIGHT CUT	HHHH
10	OPR PNL				
11	RAIL - TOP	1	10001102	10001102-F-01	A
12	STILE - INTERLOCK	1	10001102	10001102-F-03	A
13	STILE - LOCK	1	10001102	10001102-F-10	A
14	RAIL - BOTTOM	1	10001102	10001102-F-05	A
15	3 LITE ASTRAGAL	1	10001115	10001115-F-01	A
16	3 LITE KEEPER REINFORCEMENT	1	10001115	10001115-F-01	A
17	3 LITE KEEPER REINFORCEMENT COVER	1	1" x 2" x 1/16" ALUMINUM TUBE	STRAIGHT CUT	METALS DEPOT
18	INTERLOCK	1	10005870	STRAIGHT CUT	A
19	SCREW COVER	1	10001117	10001117-F-02	A
20	GLAZING BEAD	4	10001118	STRAIGHT CUT	A
21	STILE REINFORCEMENT - INTERLOCK	1	10001111	10001111-F-01	A
22	STILE REINFORCEMENT - LOCK	1	10300151	STRAIGHT CUT	PPPP
23	RAIL REINFORCEMENT - BOTTOM	1	10300150	10300150-F-01	PPPP
24	WEATHER-STRIPPING - 270 x 250	1	10300152	10300152-F-01	PPPP
25	MISC	AS REQD	W21255MW		HHHH
26	LOCK SET ASSEMBLY - 2817 LOCK W/ TRIMPLATE	1	DECU-XXX4		F
27	HANDLE SET ASSEMBLY	1	DECU-XXX4		F
28	HANDLE SET - INTERIOR SWITCH		DECU-XXX1		F
29	HANDLE SET - INTERIOR SWITCH / KEY		DECU-XXX2		F
30	HANDLE SET - BLANK		DECU-XXX3		F
31	ROLLER ASSEMBLY - PRECISION 1.66" WHEEL	2	1988PRST166REVSS		F
32	DRAFT PLUG - .810 DIA.	2	D6096AMWKC 0.810		HHHH
33	3/8" HOLE PLUG	2	9946		D
34	KEEPER - 2778 KEEPER - STAINLESS STEEL	1	DECU-2808-84		F
35	IMPACT BRACKET	2	0111005-D		MMMM
36	1" INSULATED GLASS - NOTE	3	REFER TO APPLICABLE TEST REPORT		
37	SETTING BLOCKS (REFER TO IG SUPPLIER GUIDELINES)	AS REQD	REFER TO APPLICABLE TEST REPORT		
38	GLAZING COMPOUND	AS REQD	REFER TO APPLICABLE TEST REPORT		
39	SCREWS	2	#10 x 1.25" PFH - 410SS		
40	LOCK SET	4	#8 x 3/4" PPH - 410SS		
41	ROLLER ASSEMBLY	AS REQD	#8 x 1" PFH - 410SS		
42	REINFORCEMENT TO PANEL	AS REQD	#8 x 5/8" PPH - 410SS		
43	INTERLOCK	4	#8 x 2" PPH - 410SS		
44	KEEPER	3	#8 x 1.25" PFH - 410SS		
45	3 LITE KEEPER REINFORCEMENT	6	#8 x 2.5" PFH - PAINTED		
46	IMPACT BRACKET				
47					

NOTE LAMINATED GLASS UTILIZES .090" SOLUTIA PVB

REV	DATE	DESCRIPTION	BY

CONFIDENTIAL  
UNPUBLISHED WORK © 2010  
DECEUNINCK NORTH AMERICA

MONROE, OH  
NORTH AMERICA

000 620 PD - 007

JGM

000620PD-007

**ELEMENT MATERIALS TECHNOLOGY**

1924 Premier Row  
Orlando, FL 32809

ESP NO. ESP0091100P-1AP2

Date Verified: 4/20/12

Verified By: [Signature]

THIS DOCUMENT CONTAINS PROPRIETARY AND CONFIDENTIAL INFORMATION. DO NOT COPY OR DISCLOSE THIS INFORMATION WITHOUT THE EXPRESS WRITTEN CONSENT OF DECEUNINCK NORTH AMERICA. DECEUNINCK NORTH AMERICA RESERVES THE RIGHT TO CHANGE THIS DRAWING AND ANY ASSOCIATED DOCUMENTS.

# 623.000 PD - 004 - BILL OF MATERIALS 3 & 4 LITE

ITEM NO.	DESCRIPTION	QUANTITY	PART NO.	FAB DWG. NO	SOURCE
1	HEAD	1	10001100	10001100-F-01	A
2	JAMB	2	10001100	10001100-F-01	A
3	EXTERIOR FRAME COVER	2	10001100	10001100-F-05	A
4	INTERIOR FRAME COVER	2	10001104	10001104-F-01	A
5	SILL	4	10001104	STRAIGHT CUT	A
6	SILL THRESHOLD	1	10001101	10001101-F-01	A
7	SILL RISER	1	10300171	10300171-F-01	PPPP
8	WEATHER-STRIPPING - .270 x .250	2	10001105	10001105-F-01	A
9			W21255MW		HHHH
10	MISC				
11	SNUBBER	6	10300148	10300148-F-01	PPPP
12	ROLLER TRACK CAP	1	1A16719	STRAIGHT CUT	N
13	L - BRACKET	4	011H027	STRAIGHT CUT	LLLL
14	SILL FRAME GASKET	2	G-A302-Z1-G800		CC
15	FRAME REINFORCEMENT	4	10300149	STRAIGHT CUT	PPPP
16	KEEPER	1			F
17	2778 KEEPER - YZD MILD STEEL		DECU-2808-00		DDDD
18	2778 KEEPER - STAINLESS STEEL		DECU-2808-84		MMMM
19	T - BRACKET	1 OR 2	10300213		
20	SCREEN KEEPER	1	011H040		
21	BUMPER STOP	2 OR 4	2152.525		
22	SCREWS				
23	SNUBBER	36	#8 x 1.25" PFH - 410SS		
24	L - BRACKET - SASH	8	#8 x 1" PFH - 410SS		
25	L - BRACKET - HEAD	8	#8 x 0.75" PFH - 410SS		
26	L - BRACKET - HEAD	8	#8 x 2.5" PFH - 410SS		
27	SILL RISER	4	#8 x 1.25" PFH - 410SS		
28	FRAME ASSEMBLY	4	#8 x 1.25" PFH - 410SS		
29	SCREEN KEEPER	12	#8 x 2.5" PPH - 410SS		
30	T - BRACKET	2	#6 x .375" PPH		
31	T - BRACKET	8 OR 16	#8 x 2.5" PFH - 410SS		

**ELEMENT MATERIALS TECHNOLOGY**  
1924 Premier Row  
Orlando, FL 32809

**ESP NO.** ESP009160 P-1 & P-2  
**Date Verified:** 4/20/12  
**Verified By:** w

REV	DATE	DESCRIPTION	BY

**deceuninck**  
NORTH AMERICA

COPYRIGHT 2010

MONROE, OH

NAME: 623.000 PD - 004

DWN BY: JGM

CHD BY:

DWG NO: 623000PD-004

THIS DOCUMENT CONTAINS PROPRIETARY AND CONFIDENTIAL INFORMATION DO NOT COPY OR DISCLOSE THIS INFORMATION WITHOUT THE EXPRESS WRITTEN CONSENT OF DECEUNINCK NORTH AMERICA. DECEUNINCK NORTH AMERICA RESERVES THE RIGHT TO CHANGE THIS DRAWING AND ANY ASSOCIATED DOCUMENTS.

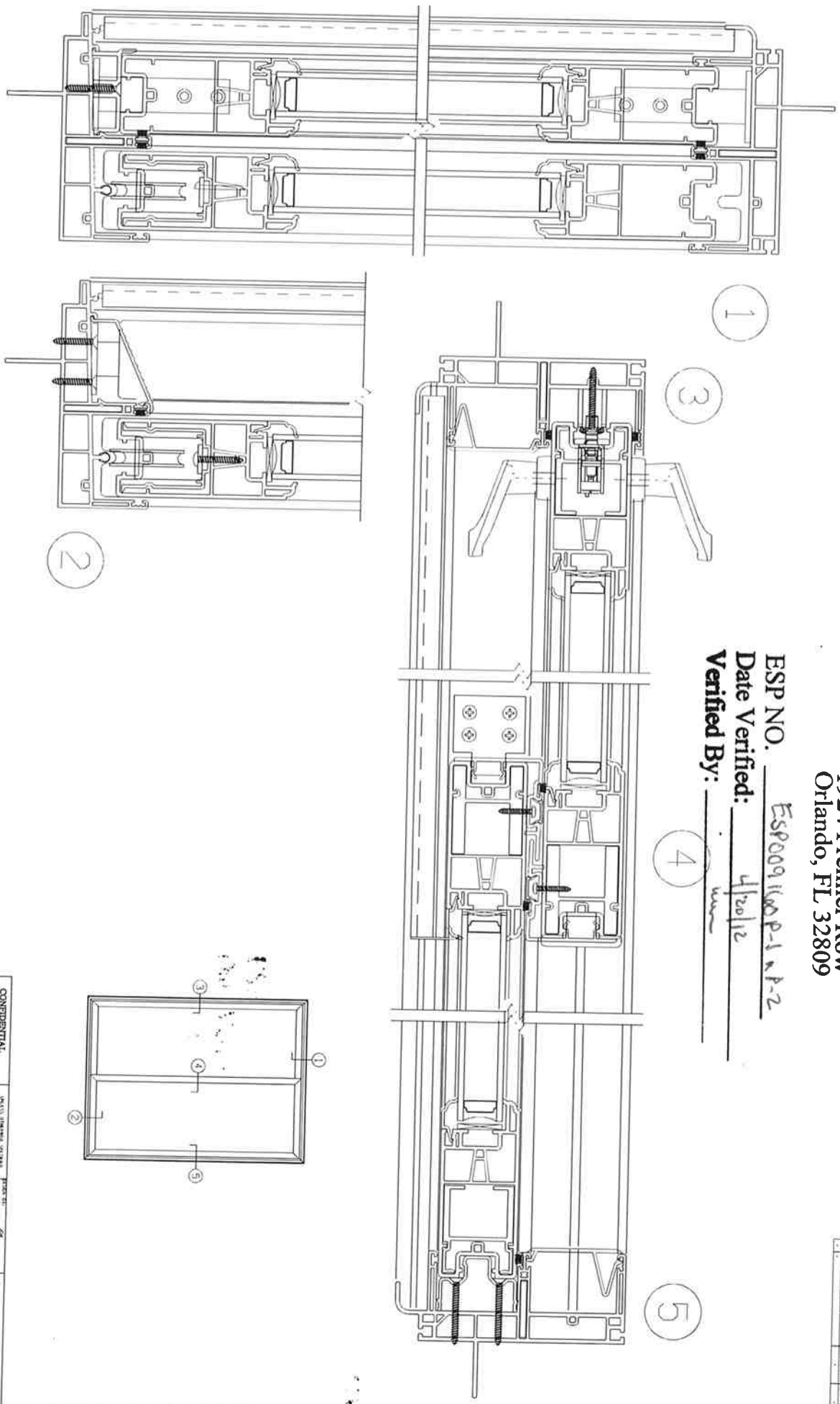
**ELEMENT MATERIALS TECHNOLOGY**

124 QUANTICO, SUITE 200, WEST PALM BEACH, FL 33411  
 PHONE: 561-832-1100 FAX: 561-832-1101  
 WWW: WWW.ELEMENTMATERIALS.COM

ESP NO. ESP0091600-P-1 & P-2

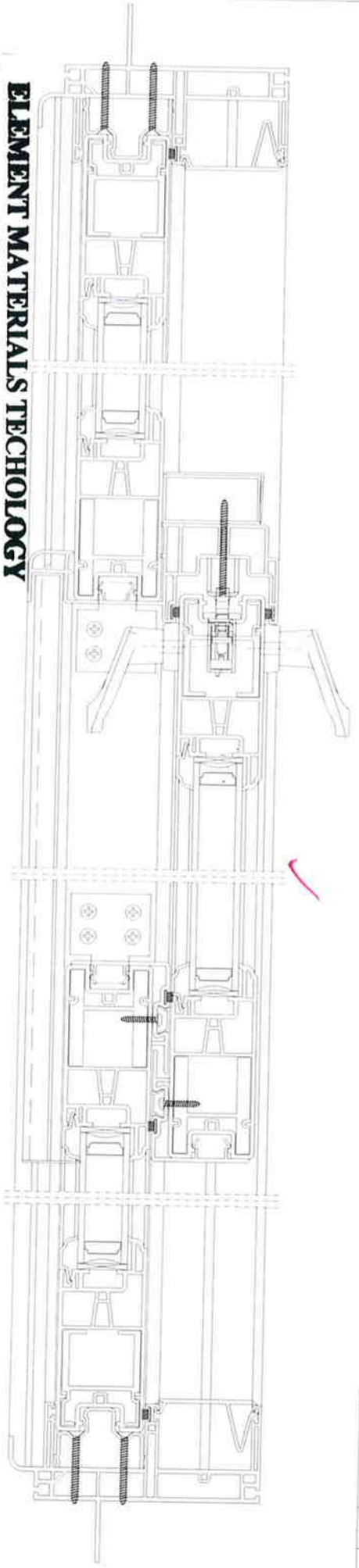
Date Verified: 4/20/12

Verified By: \_\_\_\_\_



<b>CONFIDENTIAL</b>		DATE: 04/20/12	
ELEM TECH		DESIGNER: _____	
DRAWN BY: _____		CHECKED BY: _____	
PROJECT: _____		DATE: _____	
REV: _____		SCALE: _____	
PART: _____		MATERIAL: _____	
QUANTITY: _____		FINISH: _____	
SPEC: _____		STANDARD: _____	
DRAWING NO: 521620-P-003		PROJECT: _____	
DATE: _____		SCALE: _____	
DRAWN BY: _____		CHECKED BY: _____	
DESIGNED BY: _____		DATE: _____	
ELEM TECH		ELEM TECH	

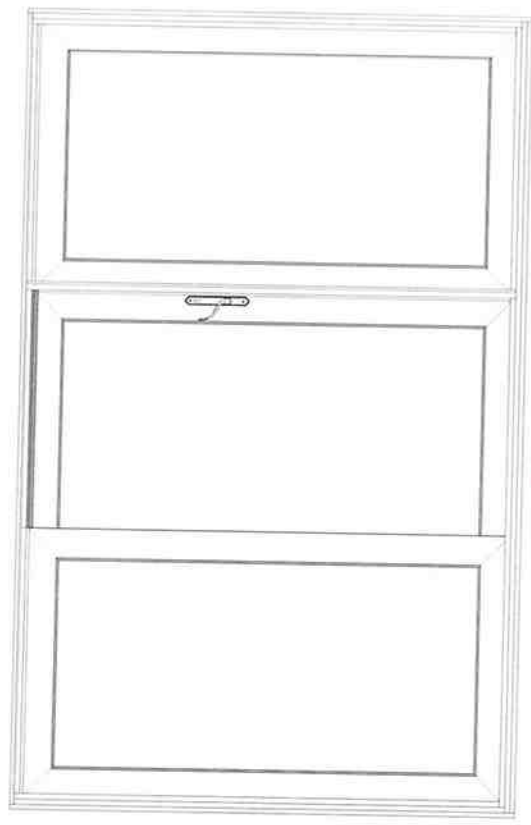
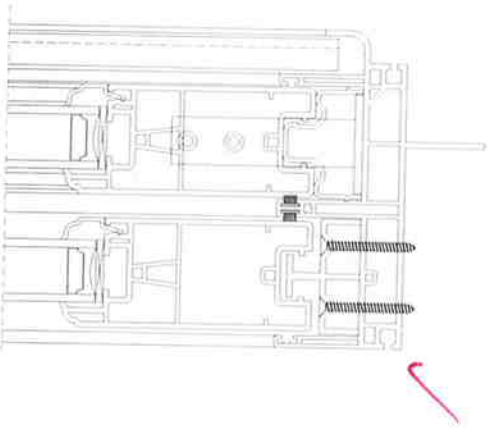
240 UNIT PRICE: \$1,200.00  
240 UNIT PRICE: \$1,200.00  
240 UNIT PRICE: \$1,200.00



**ELEMENT MATERIALS TECHNOLOGY**

1924 Premier Row  
Orlando, FL 32809

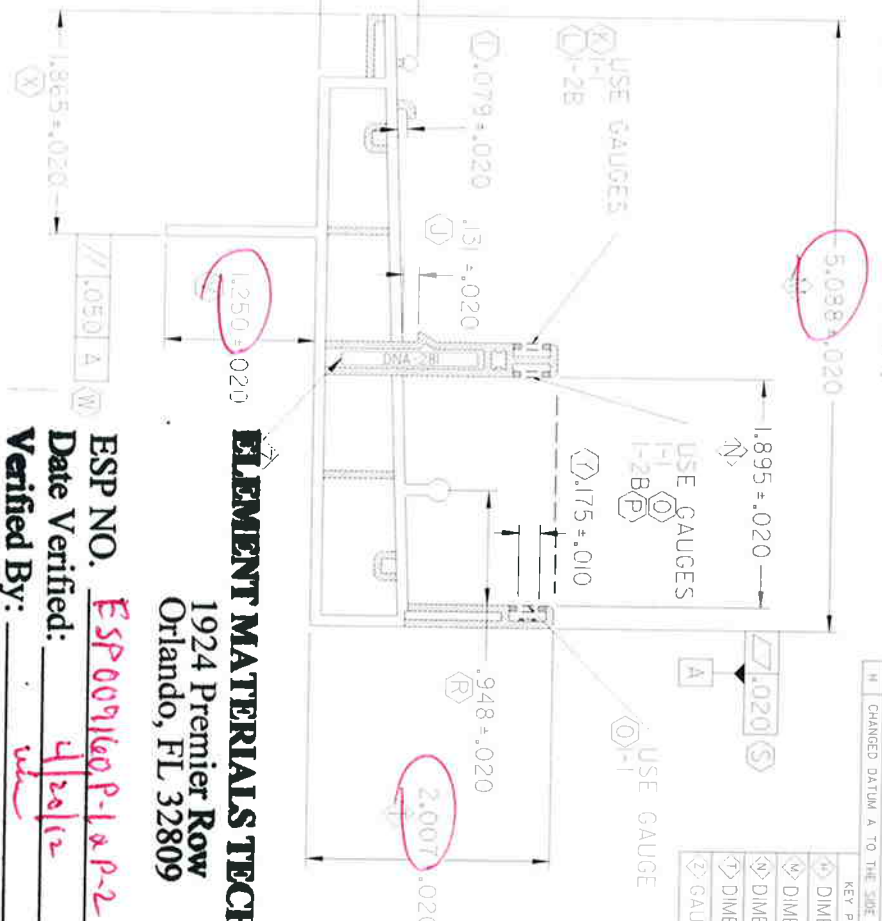
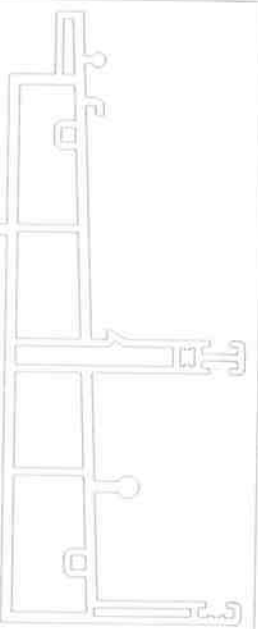
ESP NO. ESP009140P-1A R-2  
Date Verified: 4/24/12  
Verified By: \_\_\_\_\_



<b>CONFIDENTIAL</b>	
UNLAWFUL TO REPRODUCE OR DISSEMINATE WITHOUT THE WRITTEN PERMISSION OF THE COMPANY.	
DATE: 04/24/12	TIME: 10:00 AM
PROJECT: 633650 PD - 004	DRAWN BY: [Redacted]
CHECKED BY: [Redacted]	APPROVED BY: [Redacted]
DATE: 04/24/12	TIME: 10:00 AM
ELEMENTS TECHNOLOGY	
1924 PREMIER ROW	
ORLANDO, FL 32809	
TEL: 407.255.1234	
WWW.ELEMENTSTECH.COM	



CAD MAINTAINED. CHANGES SHALL BE INCORPORATED BY THE DESIGN ACTIVITY.



NOTES:

1. STANDARD: STRAIGHTNESS CLASS A AND LENGTH TOLERANCES APPLY  $\Delta$
2. INTERPRET ALL TOLERANCE APPLICATIONS PER STANDARD  $B$
3. UNSPECIFIED EXTERNAL RADIUS = .005  $\ominus$
4. UNSPECIFIED INTERNAL RADIUS = .005  $\oplus$
5. UNSPECIFIED EXTERNAL WALL THICKNESS = .XXX  $\pm$  .005  $\ominus$
6. UNSPECIFIED INTERNAL WALL THICKNESS = .XXX  $\pm$  .005  $\oplus$

**CONFIDENTIAL**  
UNPUBLISHED WORK © 2011  
DECEUNICK NORTH AMERICA

UNLESS OTHERWISE SPECIFIED  
TOLERANCES ARE IN INCHES  
2 PLACES TO THE RIGHT OF  
INTERPRET DIM AND TOL PER  
ASME Y14.5M - 1994

3RD ANGLE PROJECTION

**ELEMENT MATERIALS TECHNOLOGY**  
1924 Premier Row  
Orlando, FL 32809

ESP NO. ESP009160P-1-a-p-2  
Date Verified: 4/20/12  
Verified By: [Signature]

REVISION HISTORY			
REV	DESCRIPTION	DATE	APPROVED
1	CHANGED DATUM A TO THE SIDE	11/05/10	BMB

KEY PRODUCT CHARACTERISTICS	
$\circlearrowleft$ DIMENSION	.782 - .822
$\circlearrowleft$ DIMENSION	5.068 - 5.108
$\circlearrowleft$ DIMENSION	1.875 - 1.915
$\circlearrowleft$ DIMENSION	1.987 - 2.207
$\circlearrowleft$ GAUGE	DNA-281

REV	DATE	BY	APPROVED
1	00/00/20	RJC	
2	00/00/20	DATE	
3	00/00/20	DATE	

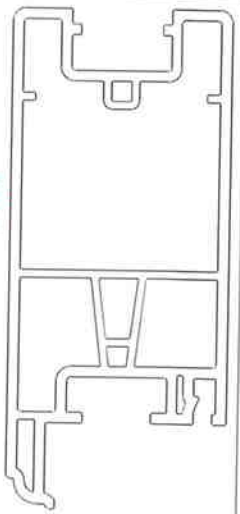
SILL FRAME - PP	
DATE	BY
11/05/10	BMB
00/00/20	
00/00/20	

1000001 S4I

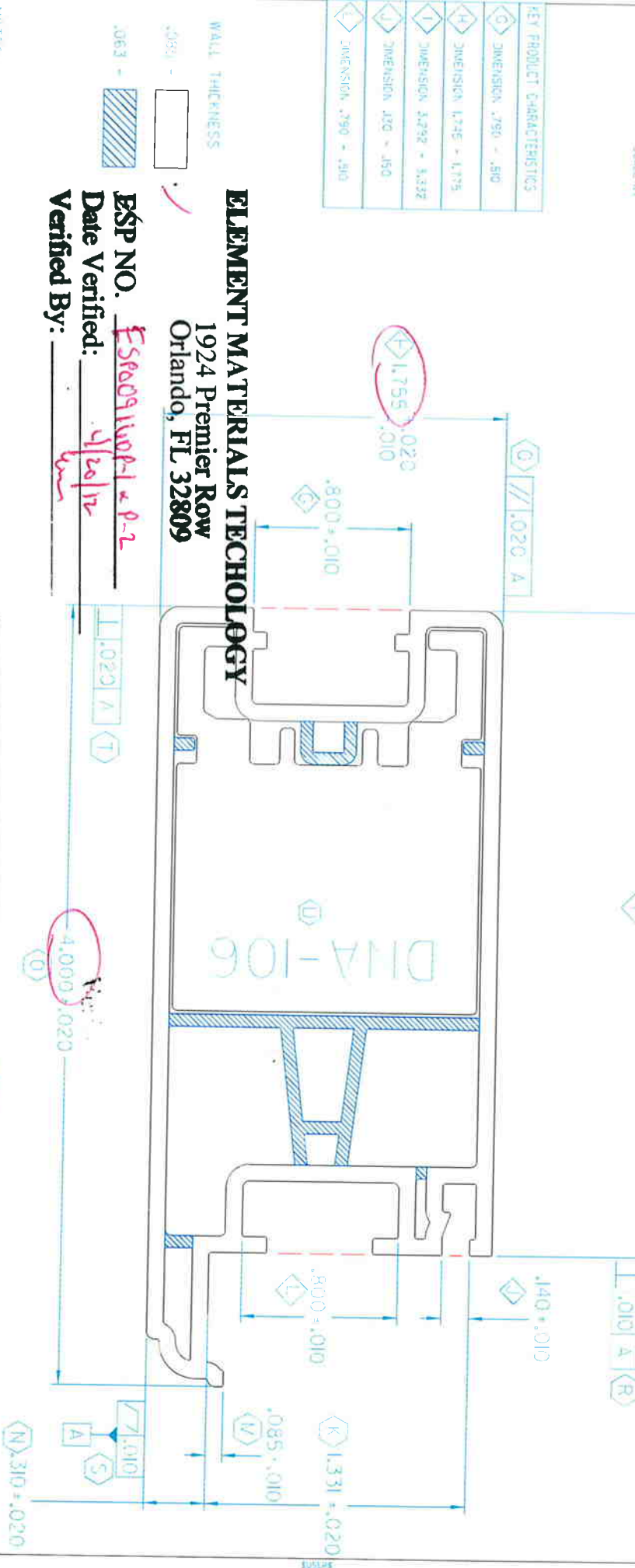
108 1

CAD MAINAINED. CHANGES SHALL BE INCORPORATED BY THE DESIGN ACTIVITY.

REV	DESCRIPTION	DATE	APPROVED
H	ADDED (GLID)	08/25/2016	BAR



KEY PRODUCT CHARACTERISTICS	
G	DIMENSION .750 ± .010
H	DIMENSION 1.745 ± 1.175
I	DIMENSION 3.292 ± 3.332
J	DIMENSION .100 ± .150
L	DIMENSION .290 ± .310



**ELEMENT MATERIALS TECHNOLOGY**  
 1924 Premier Row  
 Orlando, FL 32809

**ESP NO.** ES000911001-1 & P-2  
**Date Verified:** 4/20/17  
**Verified By:** [Signature]

- NOTES:
1. STANDARD STRAIGHTNESS CLASS B AND LENGTH TOLERANCES APPLY
  2. INTERRET ALL TOLERANCE APPLICATIONS PER STDY013(B)
  3. UNSPECIFIED EXTERNAL RADIUS = .XXX ± .010 / -.005 (C)
  4. UNSPECIFIED INTERNAL RADIUS = .XXX ± .020 / -.005 (D)
  5. UNSPECIFIED EXTERNAL WALL THICKNESS = .XXX ± .102 (E)
  6. UNSPECIFIED INTERNAL WALL THICKNESS = .XXX ± .202 (F)

**CONFIDENTIAL**  
 UNPUBLISHED WORK © 2008  
 DECEUNINCK NORTH AMERICA

UNLESS OTHERWISE SPECIFIED  
 DIMENSIONS IN INCHES  
 2-DIMENSIONAL ANGLES ± 0.015°  
 INTERPRET AS PER  
 ASME Y14.5M - 1994

DATE	BY	DATE	BY
04/06/20	SAD	01/28/20	BAR
04/06/20	SAD	04/06/20	BAR
04/06/20	SAD	04/06/20	BAR

**deceuninck** **20 NORTH AMERICA**

**MAIN SASH - PD**

REV: 8  
 SCALE: 2:1  
 DATE: 08/25/2016  
 PROJECT: 100-1

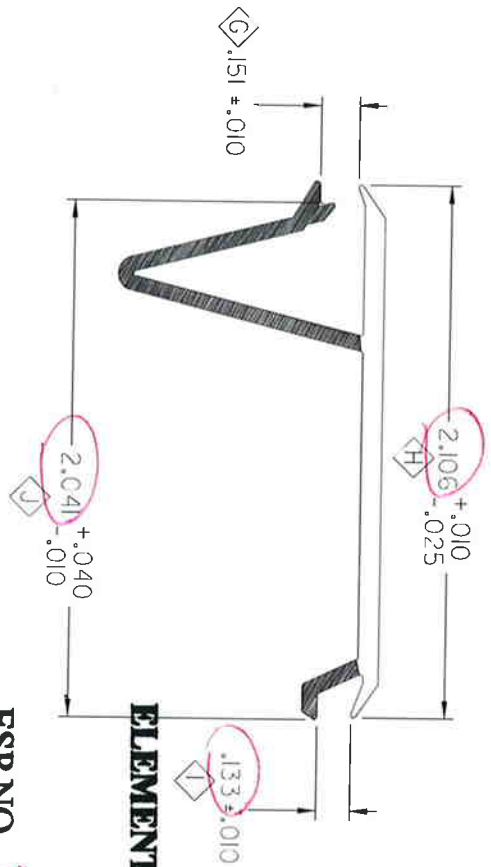


SCALE 1:1

CAD MAINTAINED. CHANGES SHALL BE INCORPORATED BY THE DESIGN ACTIVITY.

REVISION HISTORY			
REV	DESCRIPTION	DATE	APPROVED
0	KAC	10/08/25	BMB

KEY PRODUCT CHARACTERISTICS	
C	DIMENSION .141 - .161
H	DIMENSION 2.081 - 2.116
I	DIMENSION .123 - .143
J	DIMENSION 2.031 - 2.061



**ELEMENT MATERIALS TECHNOLOGY**  
 1924 Premier Row  
 Orlando, FL 32809

ESP NO. ESP009160P-1 & P-2  
 Date Verified: 4/20/12  
 Verified By: liver



- NOTES:
1. STODOLNY STRAIGHTNESS, GLASS E AND LENGTH TOLERANCES APPLY
  2. INTERPRET ALL TOLERANCES UNLESS SPECIFICATIONS PER STODOLNY
  3. UNSPECIFIED EXTERNAL RADIUS = .XXX ±.000
  4. UNSPECIFIED INTERNAL RADIUS = .XXX ±.000
  5. UNSPECIFIED EXTERNAL WALL THICKNESS = .XXX
  6. UNSPECIFIED INTERNAL WALL THICKNESS = .XXX

**CONFIDENTIAL**  
 UNPUBLISHED WORK © 2010  
 DECEUNINCK NORTH AMERICA

UNLESS OTHERWISE SPECIFIED  
 DIM ARE IN INCHES  
 TOL. ON ANGLES: .1°  
 2 PL: ±.010° 3 PL: ±.005°  
 INTERPRET DIM AND TOL. PER  
 ASME Y14.5M - 1994

DESIGN BY:	DATE:	CTC
DATE:	05/11/14	CTC
DATE:	05/11/14	CTC

THIRD ANGLE PROJECTION

SCALE: 2:1

**deceuninck** NORTH AMERICA

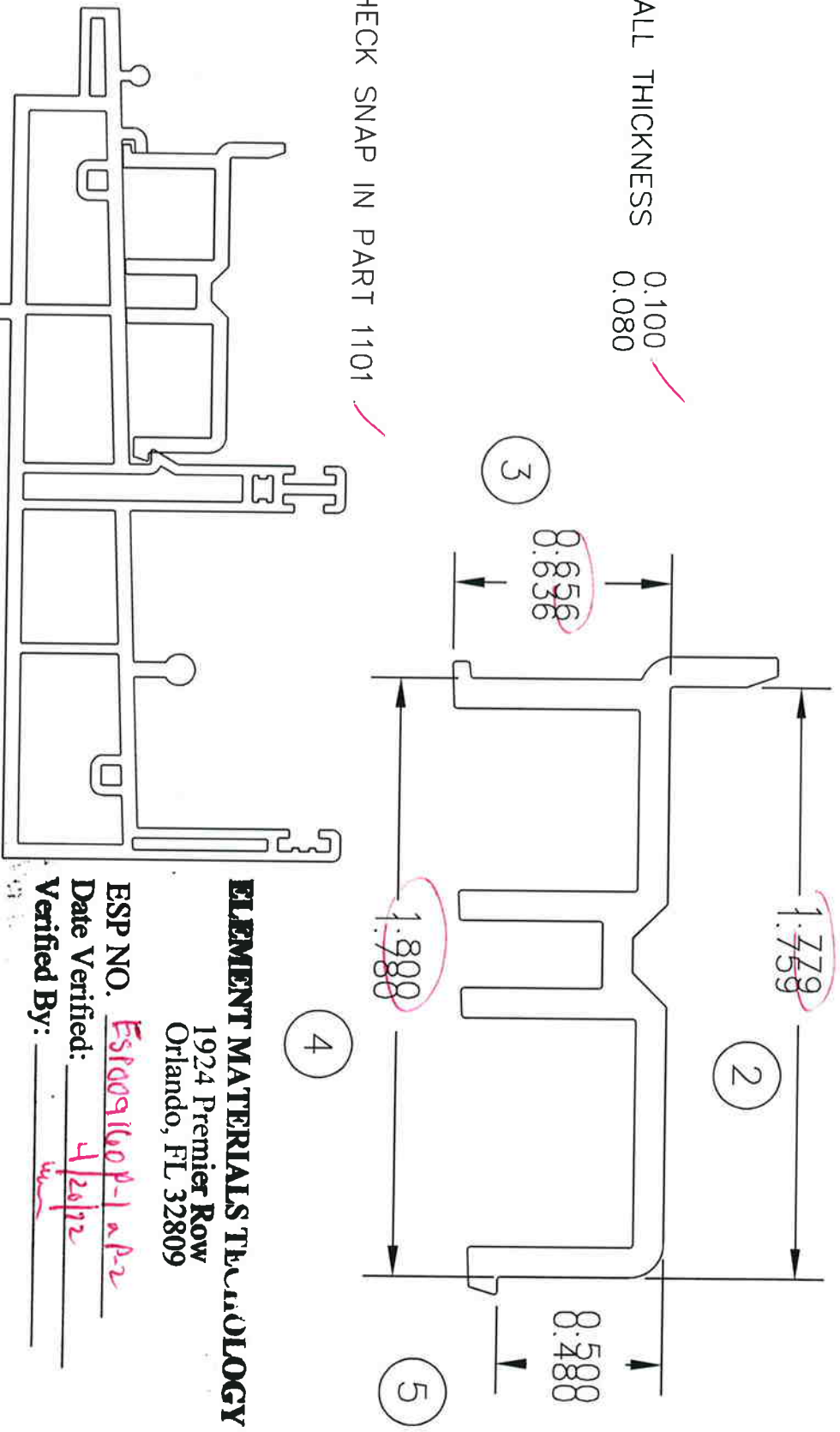
FRAME ADAPTOR

1000004 SH

SHEET: 2 of 1



- ① WALL THICKNESS 0.100 ✓  
0.080
- ⑥ CHECK SNAP IN PART 1101 ✓



**ELEMENT MATERIALS TECHNOLOGY**

1924 Premier Row  
Orlando, FL 32809

ESP NO. ESP0091609P-1 A-B-2  
 Date Verified: 4/26/92  
 Verified By: [Signature]



**Deceuninck®** NORTH AMERICA/Oakland NJ.

AREA= \_\_\_\_\_ TOL: ± 0.010  
 TOTAL WEIGHT= \_\_\_\_\_

FILENAME: \_\_\_\_\_  
 path \_\_\_\_\_

BY	DATE	MATL	SCALE
CTC	11/14/05	PVC	2:1

SILL INSERT

REV	BY	APPVD	DATE	CHANGE

10001105\_SH

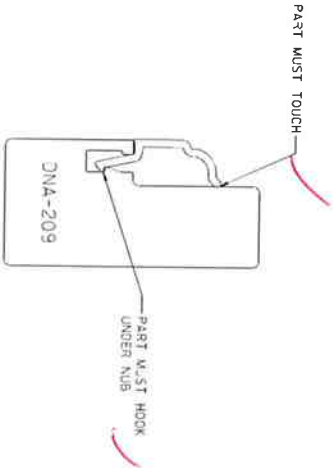
CAD MAINTAINED, CHANGES SHALL BE INCORPORATED BY THE DESIGN ACTIVITY.

REVISION HISTORY			
REV	DESCRIPTION	DATE	APPROVED
E	CHANGED MYLAR		GMB

KEY PRODUCT CHARACTERISTICS			
	ID/PL/09		GMB
G	GAUGE DNA-209		
H	GAUGE DNA-209		
I	GAUGE DNA-209		
J	GAUGE DNA-209		



SCALE 1:1

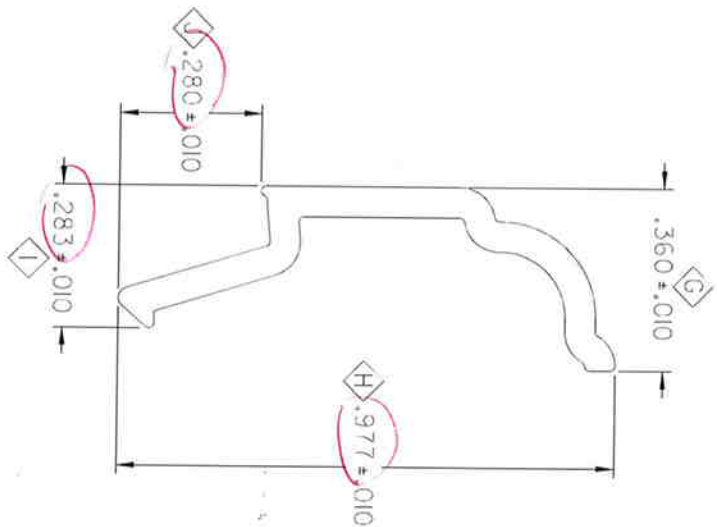


SLIDE PART INTO GAUGE FROM THE END. PART WILL NOT SNAP INTO GAUGE

WALL THICKNESS  
.060 -

NOTES:

1. STANDARD STRAIGHTNESS CLASS A AND LENGTH TOLERANCES APPLY (A)
2. STANDARD ALL TOLERANCE APPLICATIONS PER STANDARD (B)
3. UNSPECIFIED INTERNAL RADII = .XXX ±.000 / -.005 (D)
4. UNSPECIFIED EXTERNAL RADII = .XXX ±.000 / -.005 (D)
5. UNSPECIFIED INTERNAL WALL THICKNESS = .XXX ±.002 (E)
6. UNSPECIFIED EXTERNAL WALL THICKNESS = .XXX ±.002 (E)



USE MYLAR 1000MIII, OP REV D

# ELEMENT MATERIALS TECHNOLOGY

19 Premier Row  
O FL 32809

ESP NO. ESP009140P-1 OP-2

Date Verified: 4/20/12

Verified By: Wm

**CONFIDENTIAL**  
UNPUBLISHED WORK © 2010  
DECEUNNICK NORTH AMERICA

THIS DOCUMENT CONTAINS PROPRIETARY AND CONFIDENTIAL INFORMATION. DO NOT COPY OR DISCLOSE THIS INFORMATION WITHOUT THE EXPRESS WRITTEN CONSENT OF DECEUNNICK NORTH AMERICA. ANY UNAUTHORIZED REPRODUCTION OF THIS DRAWING AND ANY ASSOCIATED DOCUMENTS.

UNLESS OTHERWISE SPECIFIED  
DIM ARE IN INCHES  
TOL ON ANGLES: 1°  
2 PL: ±0.010° 3 PL: ±0.005°  
INTERPRET DIM AND TOL PER  
ASME Y14.5M - 1994


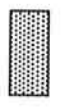
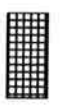

THIRD ANGLE PROJECTION

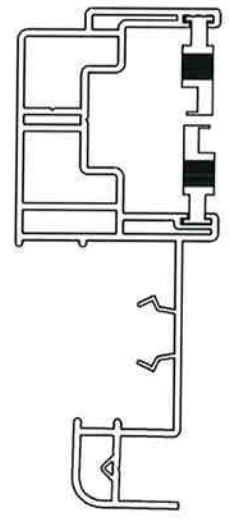
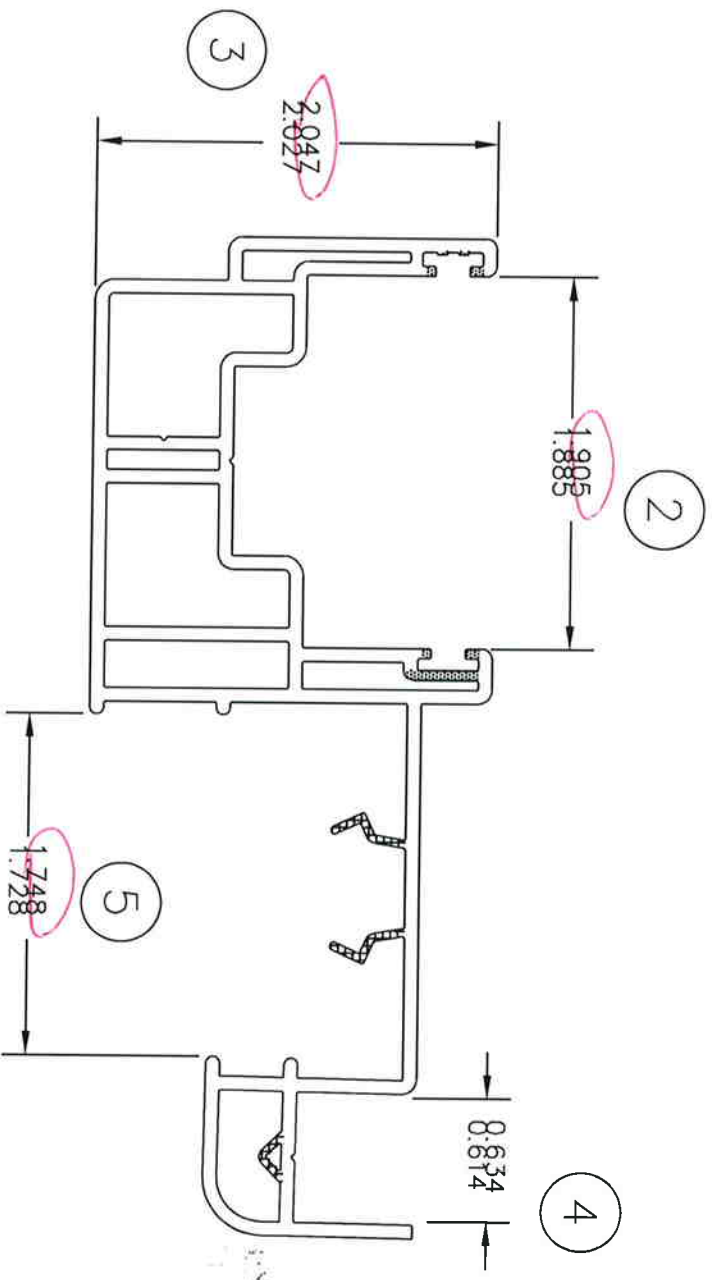
DESIGN BY:	MG
DATE:	00/12/01
DRAWN BY:	MG
DATE:	00/12/01
AUTH:	DATE:
AUTH:	DATE:
REVIEWER:	DATE:

**deceunick** AN ELEMENT MATERIALS COMPANY  
NORTH AMERICA

CLAZING BEAD

SCALE: 4:1 | LENS: 7.1 | .049 | SHEET: E

- 1 WALL THICKNESS
-  0.080
  -  0.060
  -  0.050
  -  0.030



6 CHECK WITH GAUGE S-3

7 CHECK SNAP IN APPROVED PART 10001102.

**ELEMENT MATERIALS TECHNOLOGY**  
 1924 Premier Row  
 Orlando, FL 32809

ESP NO. ESP009100P-1-a-R2  
 Date Verified: 4/24/12  
 Verified By: [Signature]



**Deceuninck**<sup>®</sup>  
 NORTH AMERICA/Oakland N.J.

AREA=  
 TOTAL WEIGHT= .874  
 TOL: ±0.010

FILENAME:		path	
BY	DATE	MATL	SCALE
CTC	11/14/05	PVC	1:1

3-LITE JAMB

REV	BY	APPRVD	DATE	CHANGE
-----	----	--------	------	--------

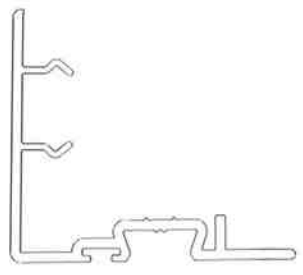
10001115

CAD MAINTAINED. CHANGES SHALL BE INCORPORATED BY THE DESIGN ACTIVITY.

REV	DESCRIPTION	DATE	APPROVED
E	KAC	10/08/27	BWB

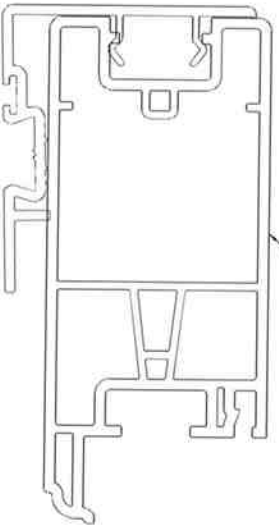
KEY PRODUCT CHARACTERISTICS

H	DIMENSION	.754 - .804
K	DIMENSION	.471 - .491
L	DIMENSION	.285 - .315
M	DIMENSION	.150 - .180
P	SNAP CONDITION	



SCALE 1:1

CHECK SNAP CONDITION WITH PART 10001102

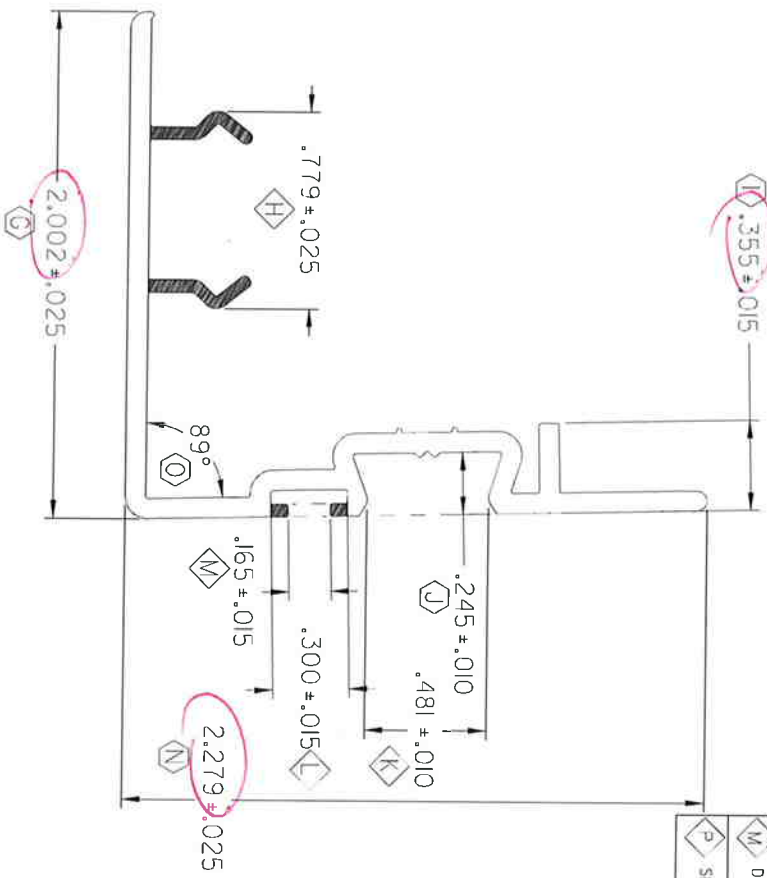


**ELEMENT MATERIALS TECHNOLOGY**

1924 Premier Row  
Orlando, FL 32809

WALL THICKNESS  
 .080 -   
 .050 -

ESP NO. ESP0091100P-1-P-2  
 Date Verified: 4/26/12  
 Verified By: dm



- NOTES:
- ST00003 STRAIGHTNESS CLASS A AND LENGTH TOLERANCES APPLY
  - INTERPRET ALL TOLERANCE APPLICATIONS PER ST00013
  - UNSPECIFIED EXTERNAL RADIUS = .XXX +.010 / -.005
  - UNSPECIFIED INTERNAL RADIUS = .XXX +.020 / -.005
  - UNSPECIFIED EXTERNAL WALL THICKNESS = .XXX +/- .02
  - UNSPECIFIED INTERNAL WALL THICKNESS = .XXX +/- .02

**CONFIDENTIAL**  
 UNPUBLISHED WORK © 2010  
 DECEUNNICK NORTH AMERICA

THIS DOCUMENT CONTAINS PROPRIETARY AND CONFIDENTIAL INFORMATION. DO NOT COPY OR DISCLOSE THIS INFORMATION WITHOUT THE EXPRESS WRITTEN CONSENT OF DECEUNNICK NORTH AMERICA. DECEUNNICK NORTH AMERICA RESERVES THE RIGHT TO CHANGE THIS DRAWING AND ANY ASSOCIATED DOCUMENTS.

UNLESS OTHERWISE SPECIFIED  
 DIM ARE IN INCHES  
 TOL ON ANGLES ± 1°  
 2 PL: ± 0.010° 3 PL: ± 0.005°  
 INTERPRET DIM AND TOL PER  
 ASME Y14.5M - 1994

THIRD ANGLE PROJECTION

DESIGN BY:	PCW
DATE:	06/12/22
DRAWN BY:	JDA
DATE:	07/01/02
AUTH:	DATE:
AUTH:	DATE:
FILENAME:	FILE NAME:

**deceunick** 3M NORTH AMERICA  
 NORTH AMERICA

NAME: **SASH ADAPTER**

SCALE: 2:1  
 SHEETS: 1 OF 1

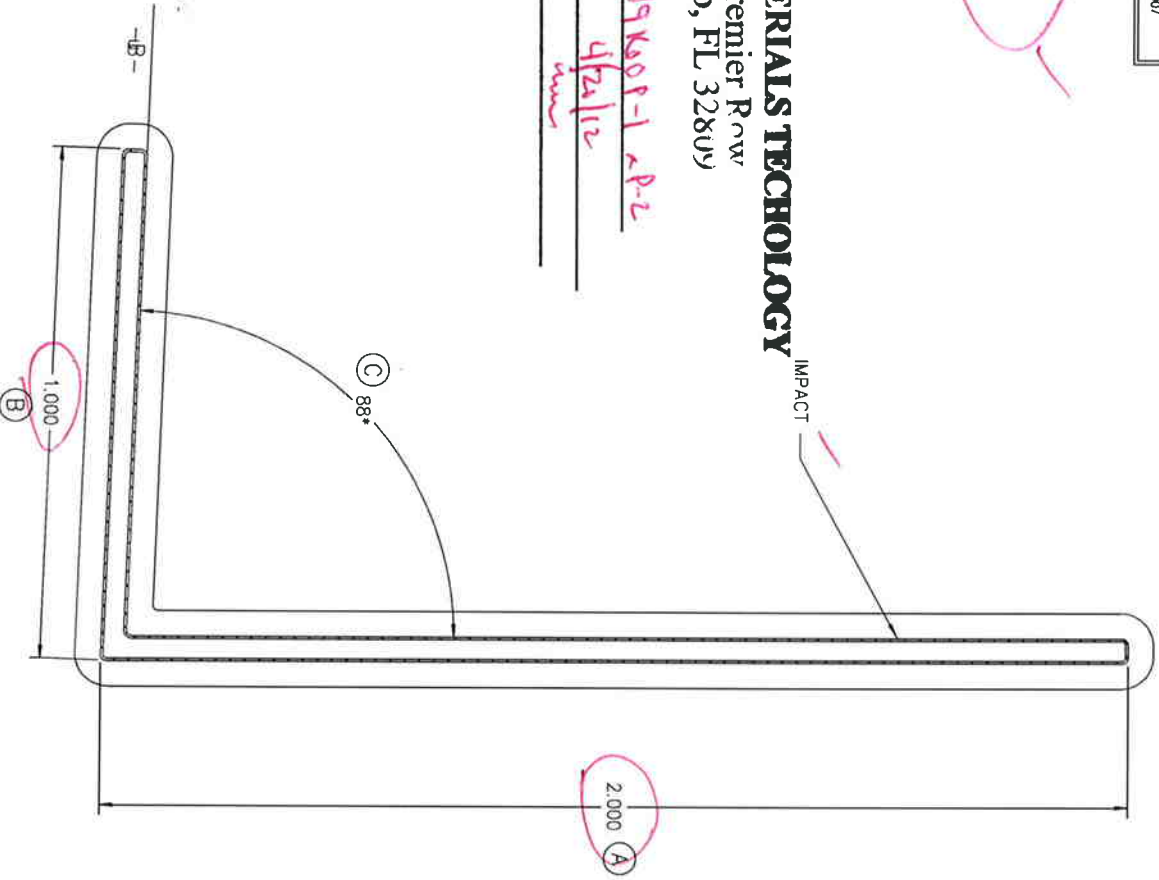
UNLESS OTHERWISE NOTED THE FOLLOWING TOLERANCES APPLY  
 .001 - .100 \* .005 1.001 - 1.500 \* .020  
 .101 - .500 \* .010 1.501 - 2.000 \* .025  
 .501 - 1.000 \* .015 2.001 - & UP \* .030  
 UNSPECIFIED ANGLES \* 1° - WOODGRAIN SURFACES ADD .007

NOTES:  
 1. WALL THICKNESS TO BE .065  
 UNLESS OTHERWISE NOTED.

**ELEMENT MATERIALS TECHNOLOGY**  
 1924 Premier Row  
 Orlando, FL 32809

ESP NO. ES8009K00P-1 A-P-2  
 Date Verified: 4/24/12  
 Verified By: [Signature]

ACTUAL SIZE:



--- = EXPOSED SURFACE --- = WOODGRAIN SURFACE

REV.	DATE	DESCRIPTION	BY
A	11/15/95	NEW TITLE BLOCK	CRB

DIM		MIN	ENG	MAX	DIM	METH	MIN	ENG	MAX
A	C-0	1.970	2.000	2.030	X				
B	C-0	0.970	1.000	1.030	Y				
C	OC	85*	88*	91*	Z				
D					AA				
E					BB				
F					CC				
G					DD				
H					EE				
I					FF				
J					GG				
K					HH				
L					II				
M					JJ				
N					KK				
O					LL				
P					MM				
Q					NN				
R					OO				
S					PP				
T					QQ				
U					RR				
V					SS				
W					TT				

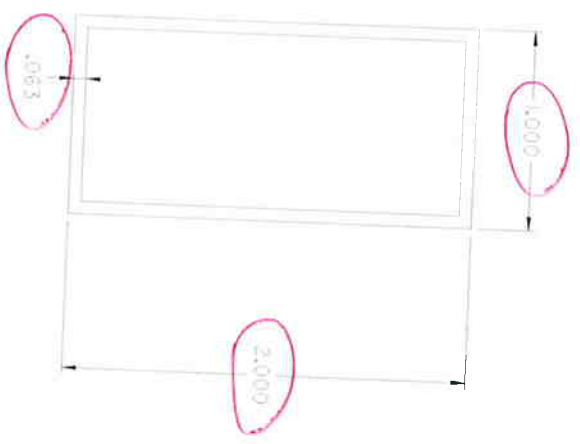
Part Wt.	Rigid:	Cop:	Flex:	Alum:	Total
(lbs/Ft)	.041	.019			.060

DAYTON TECHNOLOGIES		AN ALCOA COMPANY		Copyright 1995	
MONROE, OHIO		1 X 2 TRIM ANGLE			
NAME:	MAB	DATE:	8/25/87		
DRAWN BY:	MAB	DATE:			
CHECKED BY:		DATE:			
SCALE:	4 : 1 "B"	COLOR:	EMM ODS DEB DEW DMH		
CUST. PART NO.	5870A	PART NO.	P5870-A		

**ELEMENT MATERIALS TECHNOLOGY**  
**1924 Premier Row**  
**Orlando, FL 32809**

ESP NO. ESP009160 P-1 & P-2  
 Date Verified: 4/28/12  
 Verified By: W



**CONFIDENTIAL**  
 UNPUBLISHED WORK © 2007  
 DECEUNINCK NORTH AMERICA

THIS DOCUMENT CONTAINS PROPRIETARY AND CONFIDENTIAL INFORMATION. DO NOT COPY OR DISCLOSE THIS INFORMATION WITHOUT THE EXPRESS WRITTEN CONSENT OF DECEUNINCK NORTH AMERICA. DECEUNINCK NORTH AMERICA RESERVES THE RIGHT TO CHANGE THIS DRAWING AND ANY ASSOCIATED DOCUMENTS.

UNLESS OTHERWISE SPECIFIED  
 DIM ARE IN INCHES  
 TOL ON ANGLES  $\pm 1^\circ$   
 2 PL  $\pm 0.010$  3 PL  $\pm 0.005$   
 INTERPRET DIM AND TOL PER  
 ASME Y14.5M - 1994



THIRD ANGLE PROJECTION

DESIGN BY: JGM  
 DATE: 11/02/07

DRAWN BY: JGM  
 DATE: 11/05/09

AUTH: DATE:

AUTH: DATE:

FILENAME: DATE:

113035

**deceuninck**  
 NORTH AMERICA

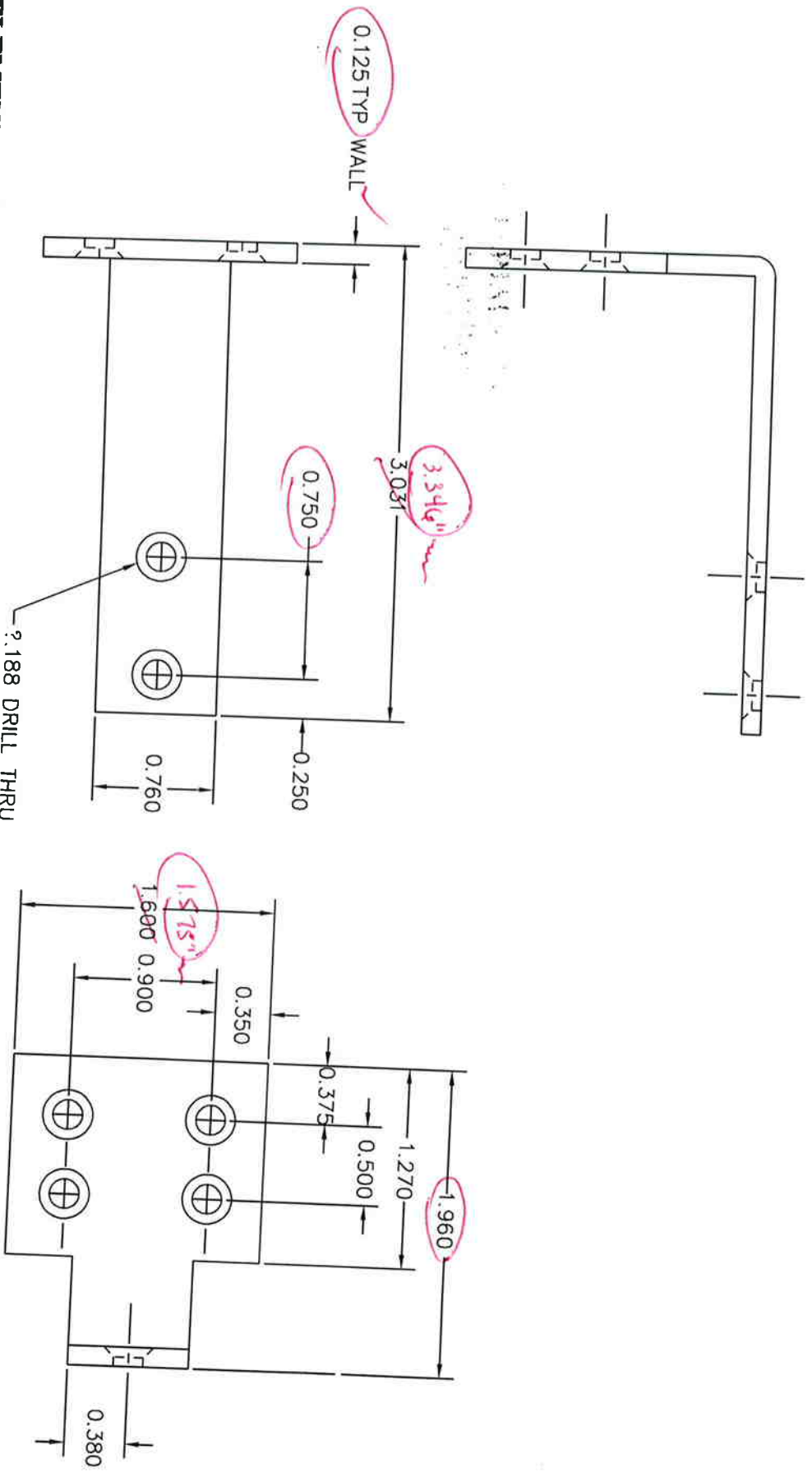


351 NORTH GAVEN ROAD  
 MONROE, OHIO 45950

1" X 2" X 1/16" BOX TUBE

STATE DWG. NO: A  
 SCALE: 1:1  
 ALUMINUM

REVISIONS: NEW



**ELEMENT MATERIALS TECHNOLOGY**

1924 Premier Row  
Orlando, FL 32809

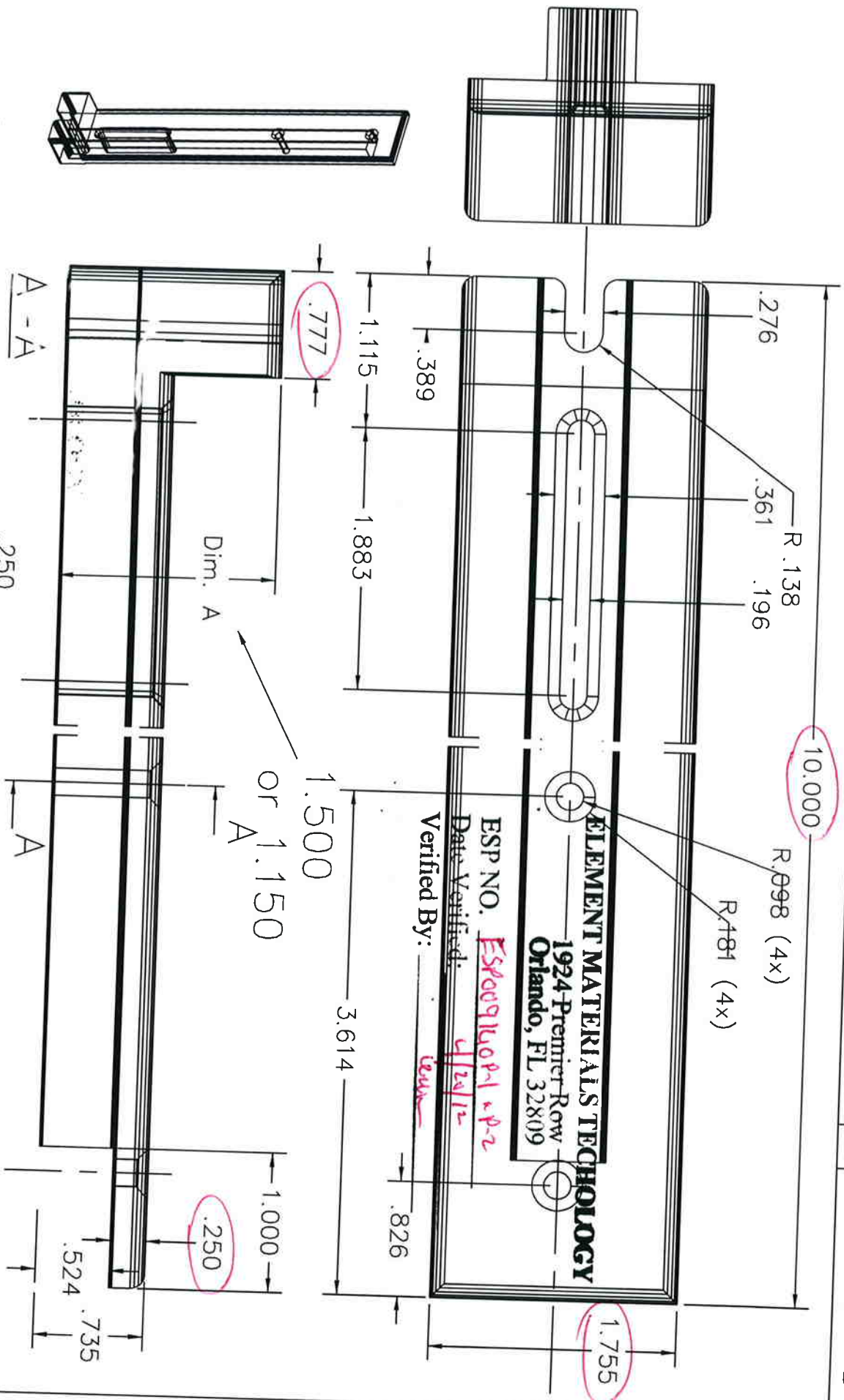
ESP NO. ESP009160P-1 \*P-2  
Date Verified: 4/20/12  
Verified By: mm

**Vinylina®** VINYL BUILDING PRODUCTS inc.  
AREA =  
WEIGHT =  
TOLERANCES (EXCEPT AS NOTED)  
±0.010

REV	BY	APPV'D	DATE	CHANGE
DRAWN	M/G	DATE	10/29/01	APPV'D
BRACKET				
MAT'L	6063-T6	SCALE	1/1	
011H027				

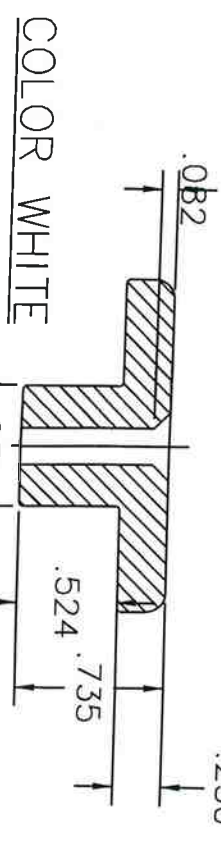
THIS MATERIAL IS PROPRIETARY & CONFIDENTIAL TO VINYL BUILDING PRODUCTS INC. & SHALL NOT BE REPRODUCED, COPIED OR DISSEMINATED WITHOUT THE EXPRESSED WRITTEN PERMISSION OF VINYL BUILDING PRODUCTS INCORPORATED.

A 011h055-D



**ELEMENT MATERIALS TECHNOLOGY**  
 1924 Premier Row  
 Orlando, FL 32809

ESP NO. *ESR00916001-0-P-2*  
 Date Verified: *4/20/12*  
 Verified By: *cew*



**VINYL BUILDING PRODUCTS INC.**

AREA = 8.109 cub in  
 WEIGHT =

TOLERANCES (EXCEPT AS NOTED)  
 ±0.010

REV	BY	APP'VD	DATE	CHANGE

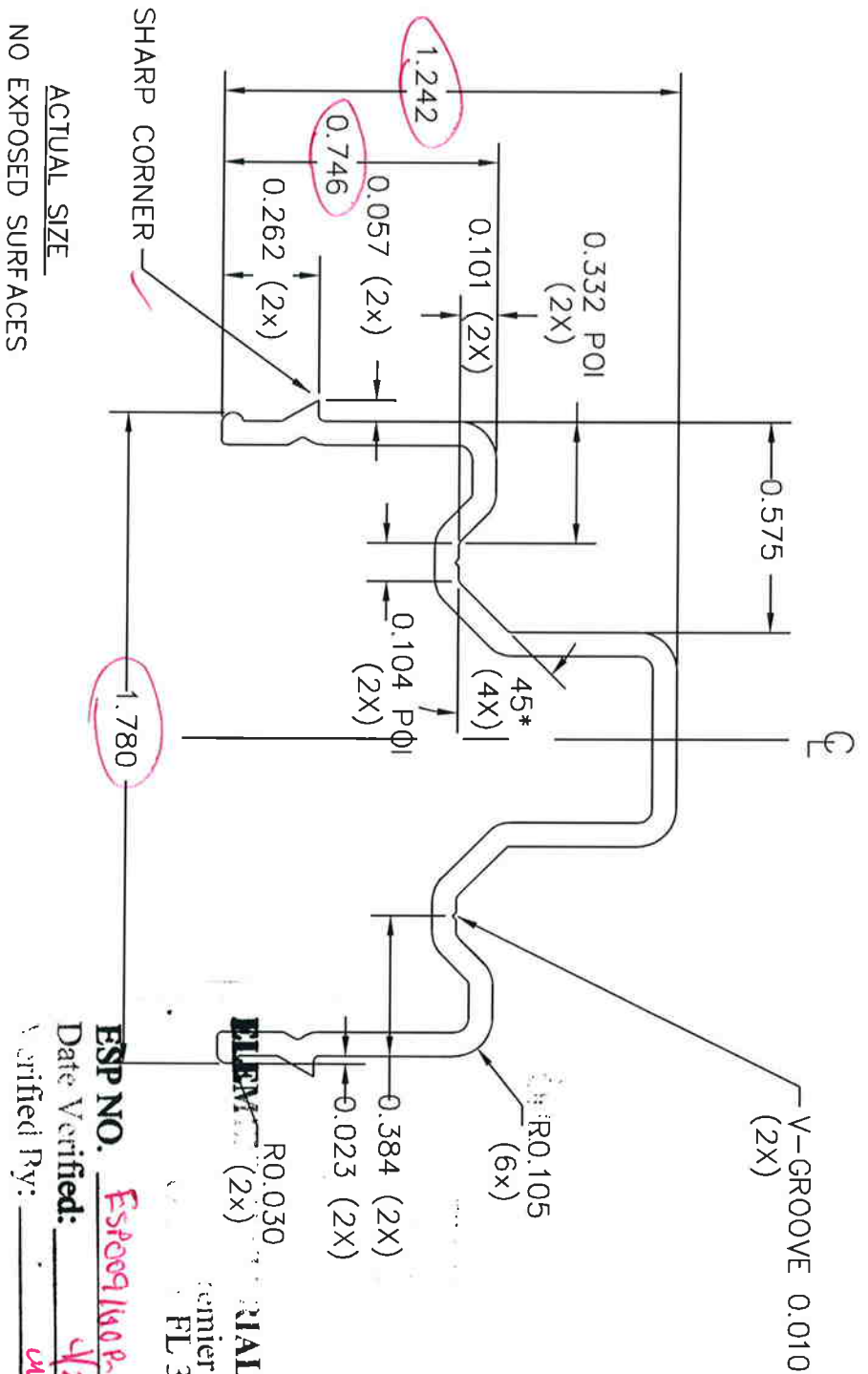
COLOR WHITE

DRAWN MG DATE 2/25/05 APP'VD  
 BRACKET

MAT'L NYLON SCALE 1/1

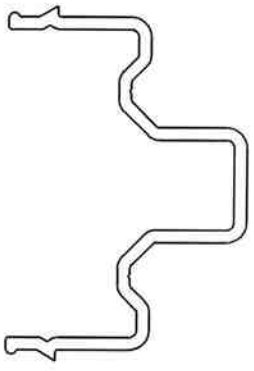
011h055-D





- NOTES:
1. ALL UNSPECIFIED RADII 0.015.
  2. ALCOA P/N 23111 (WHITE P-001, DESERT SAND P-029).

ESP NO. ESP009160R-1-2P-2  
 Date Verified: 4/20/12  
 Verified By: WJL



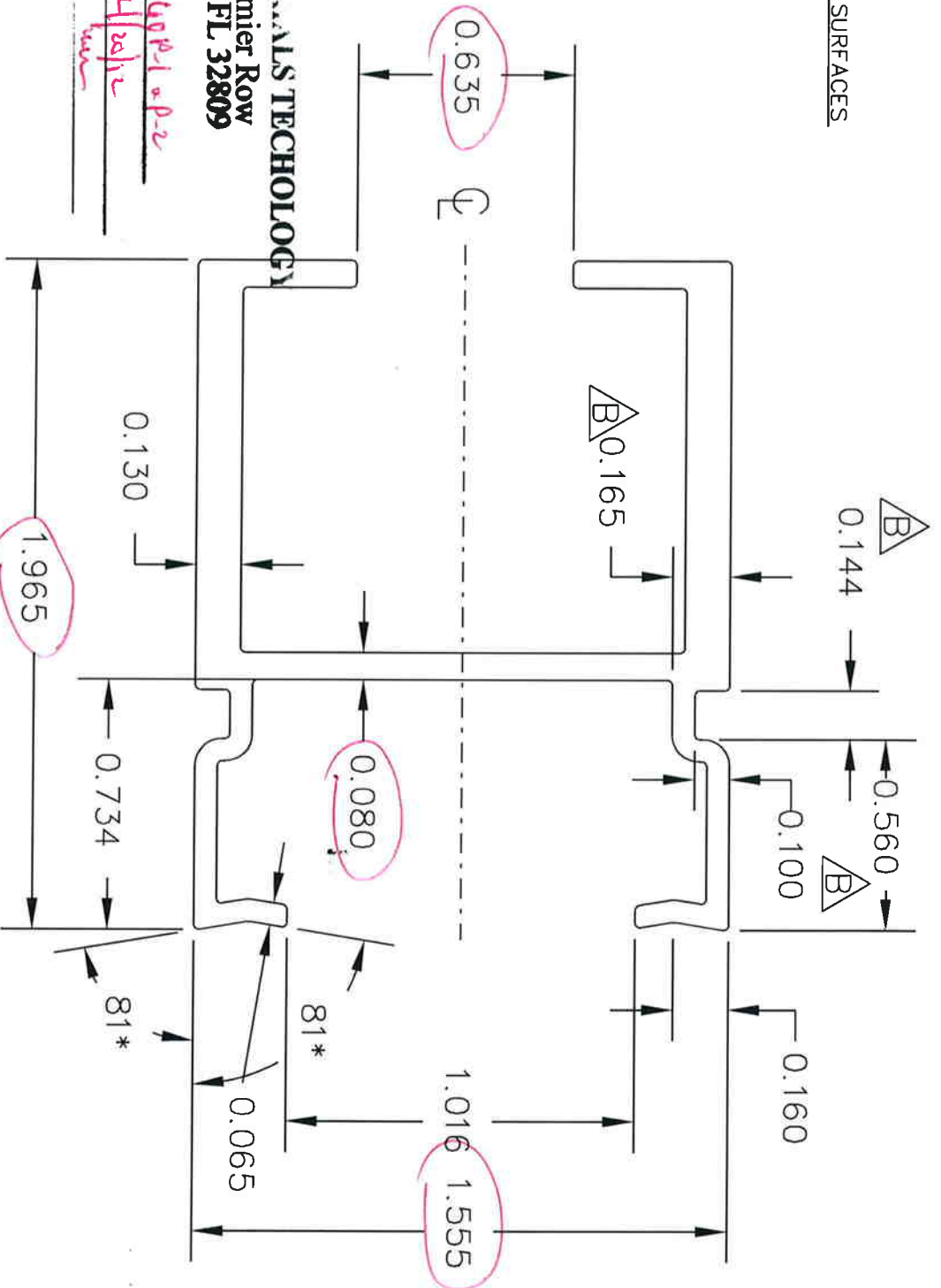
**Vinylina®** VINYL BUILDING PRODUCTS INC.

AREA = 0.269 sq in  
 WEIGHT = 0.316 lb/ft

TOLERANCES (EXCEPT AS NOTED)  
 ±0.010

REV	BY	APPV'D	DATE	CHANGE
DRAWN	MG	DATE	10/28/3	APPV'D
SNUBBER		MATL	6061-T6, 6105-15	SCALE
				2/1
				10300148

NO EXPOSED SURFACES



**ELEMENT M...**  
**1924 Premier Row**  
**Oriando, FL 32809**

ESP NO. ESP009140P-1 or P-2  
 Date Verified: 4/20/12  
 Verified By: [Signature]

NOTES:  
 1. ALL UNSPECIFIED RADII ARE 0.015.

2. MAKE FROM EITHER 6061-T6 or 6105-T6 ALUMINUM.  
 3. ALCOA PART NUMBER 23441.

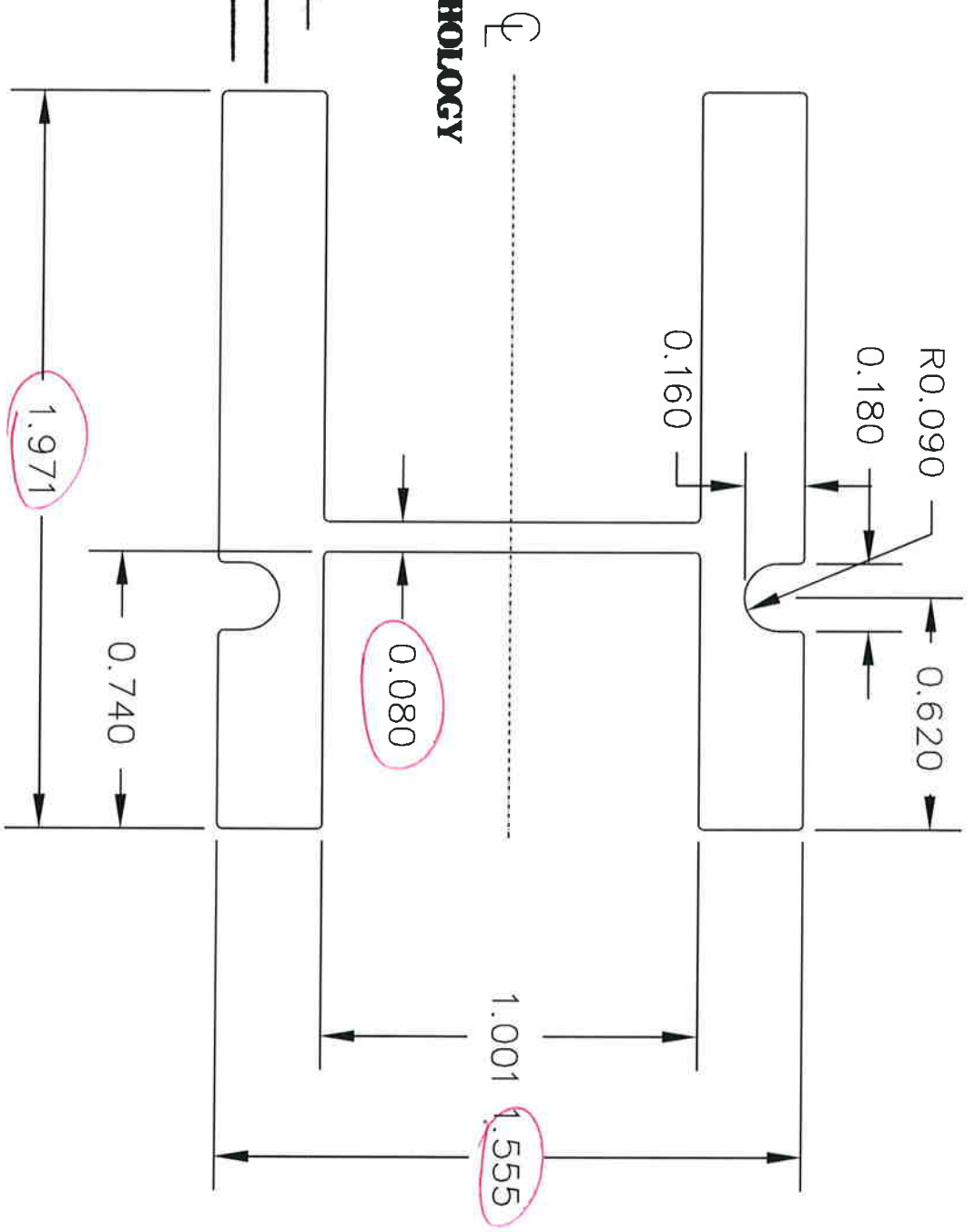
REV	BY	APPVD	DATE	CHANGE
B	CC		10/28/04	Renamed drawing 011H035B Dimension change
A	AL		6/4/04	CHANGED MATERIAL SPECS TO MAKE FROM EITHER 6061-T6 or 6105-T6 ALUMINUM

**Vinyline®** VINYL BUILDING PRODUCTS INC.  
 AREA = .612 sq in.  
 TOTAL WEIGHT = .7175 lb/ft.  
 TOLERANCE ±0.010

DRAWN	CTC	DATE	10/28/04	APPVD	MAT'L	Al 6105 T-6	SCALE	2:1
Sash Reinforcement								10300150

DNA# 10300150

NO EXPOSED SURFACES



**ELEMENT MATERIALS TECHNOLOGY**

1924 Princeton Blvd  
Orlando, FL 32817

ESP NO. ESP009160P-1-0-R2

Date Verified: 4/24/12

Verified By: luc

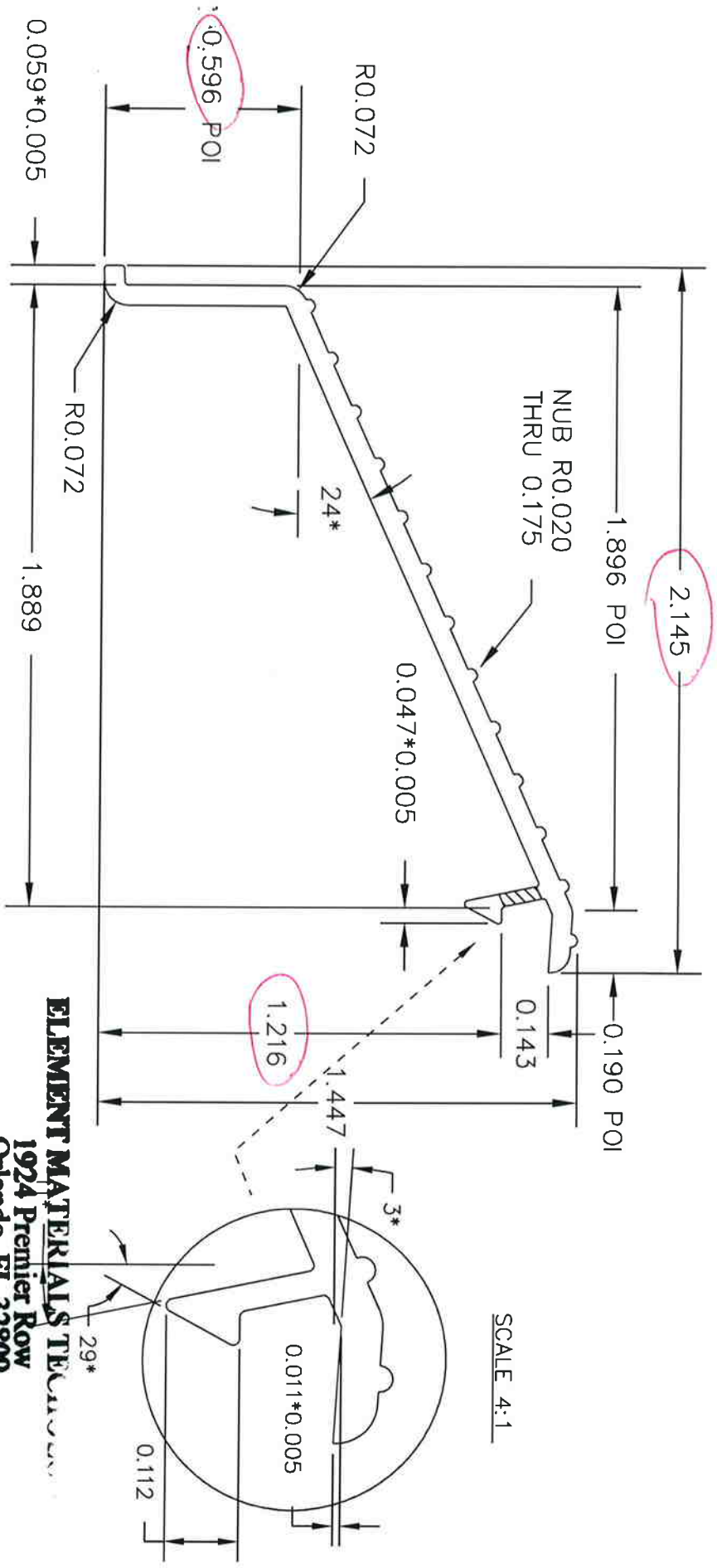
NOTES:  
1. ALL UNSPECIFIED RADII ARE 0.015.



**VINYL BUILDING PRODUCTS inc.**

AREA = 1.121  
WEIGHT = 1.316 lb/ft  
TOLERANCES (EXCEPT AS NOTED)  
?.010 [0.25]

REV	BY	APPV'D	DATE	CHANGE
DRAWN MG DATE 02/05/03 APPV'D MAT'L 6T05-15 SCALE 2/1				
SASH REINFORCEMENT XHD A 10300151				

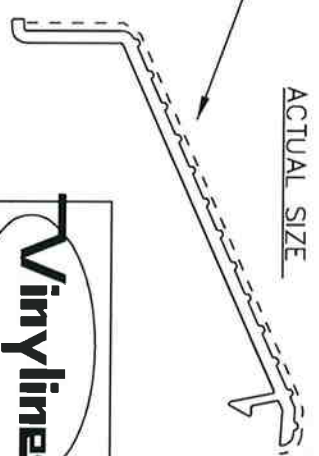


NOTES:

1. ALL UNSPECIFIED RADII ARE 0.010.
2. WALL THICKNESS.
  - 0.062
  - 0.040
3. PAINT WITH ALCOA, PPG COLOR UC73603, POLYCRON WHITE.

EXPOSED SURFACE

ACTUAL SIZE

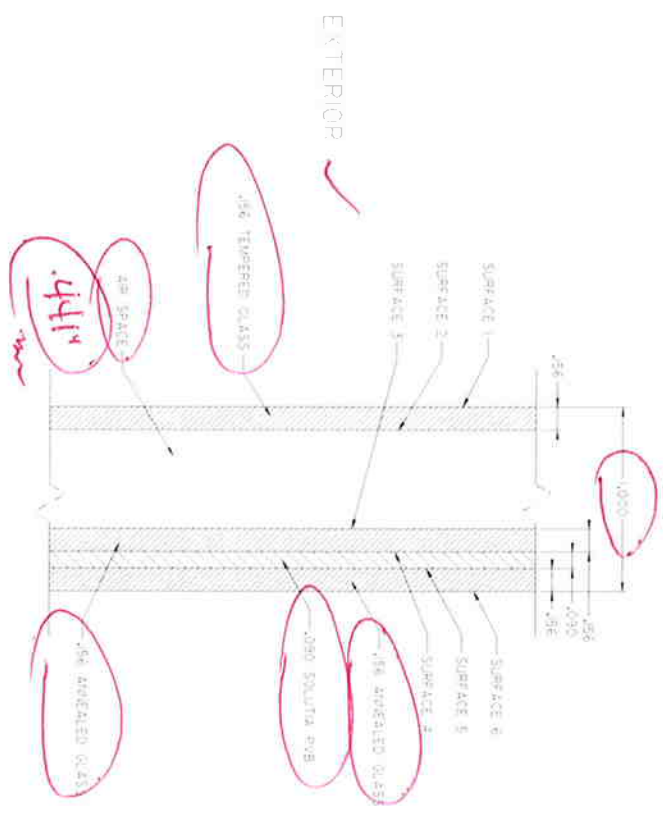


**ELEMENT MATERIALS TECHNOLOGY**  
 1924 Premier Row  
 Orlando, FL 32809

ESP NO. ESP009160P-1 & P-2  
 Date Verified: 4/26/12  
 Verified By: W

**Vinyl®** VINYL BUILDING PRODUCTS INC.  
 AREA = 0.195  
 WEIGHT = 0.229 lb/ft  
 TOLERANCES (EXCEPT AS NOTED)  
 ? .010 [0.25]

REV	BY	APPV'D	DATE	ADDED NOTE	CHANGE
A	MB		2/13/03	3.	
DRAWN			MG	DATE	12/26/00
APPV'D			APPV'D	MAT'L	6061-T6 6105-T5
SCALE			SCALE	SCALE	2/1
SILL COVER. SLIDER					A 10300171



**ELEMENT M...**  
**1924 Premier Row**  
**Orlando, FL 32809**

ESP NO. ESP009160 P-12-A2  
 Date Verified: 1/26/12  
 Verified By: [Signature]

1" OVERALL LAMIANTE IG  
 5/32" ANNEALED PANELS WITH  
 .090" SOLUTIA PVB

<b>CONFIDENTIAL</b>		UNPUBLISHED WORK © 2012 DECEUNNICK NORTH AMERICA	
THIS DOCUMENT CONTAINS PROPRIETARY AND CONFIDENTIAL INFORMATION. DO NOT COPY, REPRODUCE, OR DISSEMINATE WITHOUT THE EXPRESS WRITTEN CONSENT OF DECEUNNICK NORTH AMERICA. DECEUNNICK NORTH AMERICA, NORTH AMERICA, DECEUNNICK, NORTH AMERICA, DECEUNNICK AND ANY ASSOCIATED DOCUMENTS, DRAWING AND ANY ASSOCIATED DOCUMENTS.			
SALES OFFICE	DATE	PROJECT	PROJECT
2012	1/26/12	1924 Premier Row	1924 Premier Row
FLORIDA	DATE	PROJECT	PROJECT
1/26/12	1/26/12	1924 Premier Row	1924 Premier Row
FLORIDA	DATE	PROJECT	PROJECT
1/26/12	1/26/12	1924 Premier Row	1924 Premier Row